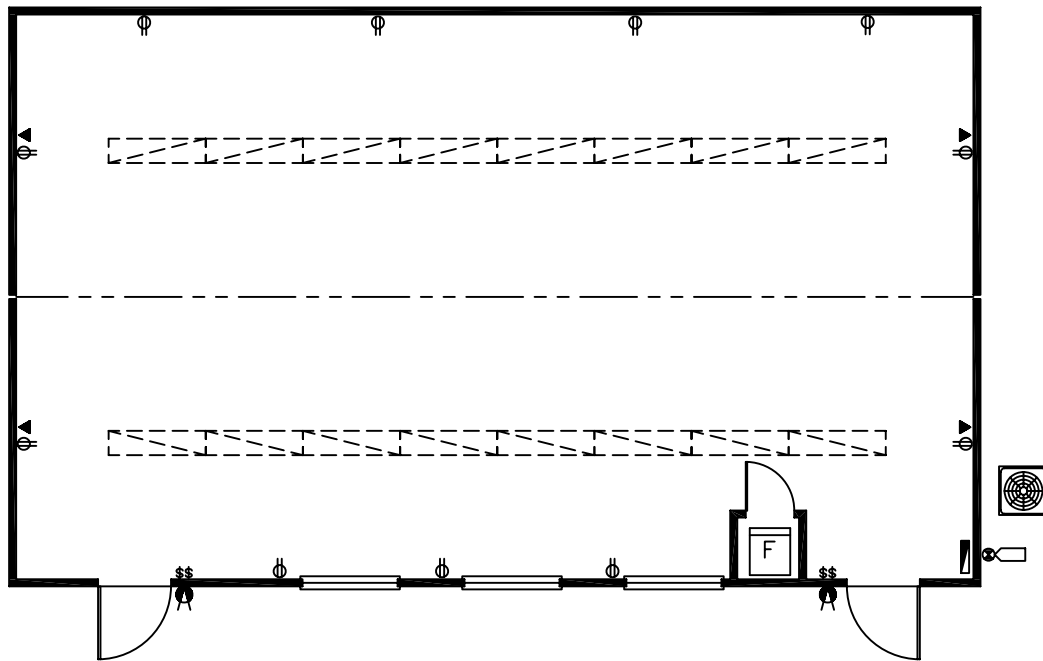
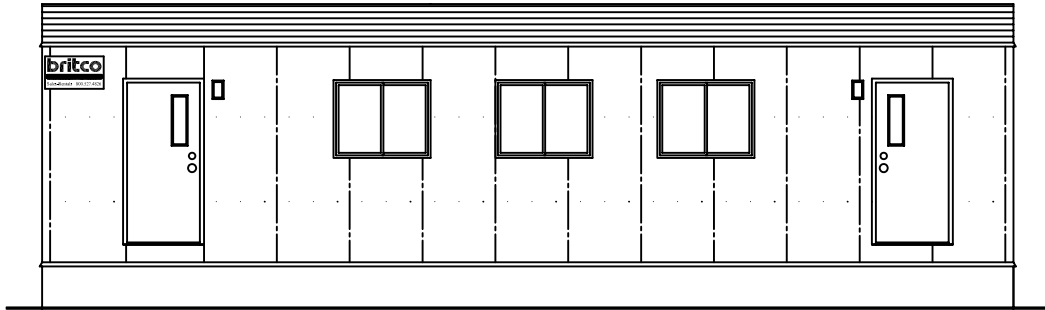


24' x 40' CLASSROOM PORTABLE - L2786



GENERAL SPECIFICATIONS

<u>Roof</u>	<ul style="list-style-type: none"> - 45 mil. EPDM roofing - Ceiling: vinyl clad gyproc (white) 	<u>Floor</u>	<ul style="list-style-type: none"> - VC Tile Flooring (commercial grade)
<u>Walls</u>	<ul style="list-style-type: none"> - Exterior: metal siding and metal fascia - Interior Finish: Vinyl clad gyproc (Norwich Pearl) 	<u>Doors</u>	<ul style="list-style-type: none"> - Exterior - steel doors & steel jambs, deadbolt, passage set & vision strip window
<u>Windows</u>	<ul style="list-style-type: none"> - 4'-0" x 3'-0" XO window with insect screens 	<u>HVAC</u>	<ul style="list-style-type: none"> - Electric forced-air furnace w/ infloor ducting - Split system air conditioning
		<u>Electrical</u>	<ul style="list-style-type: none"> - 120/240 volt electrical panel, 100 amps, single phase, mast & weather head - Electrical receptacles and tel/data conduits - Exterior light (one per exterior door) - Fluorescent lights, 2-bulb, surface mounted



NEED SPACE FAST?

Phone: 604.888.2000
 Fax: 604.888.2086
 Toll Free: 800.527.4826
 Website: www.britco.com