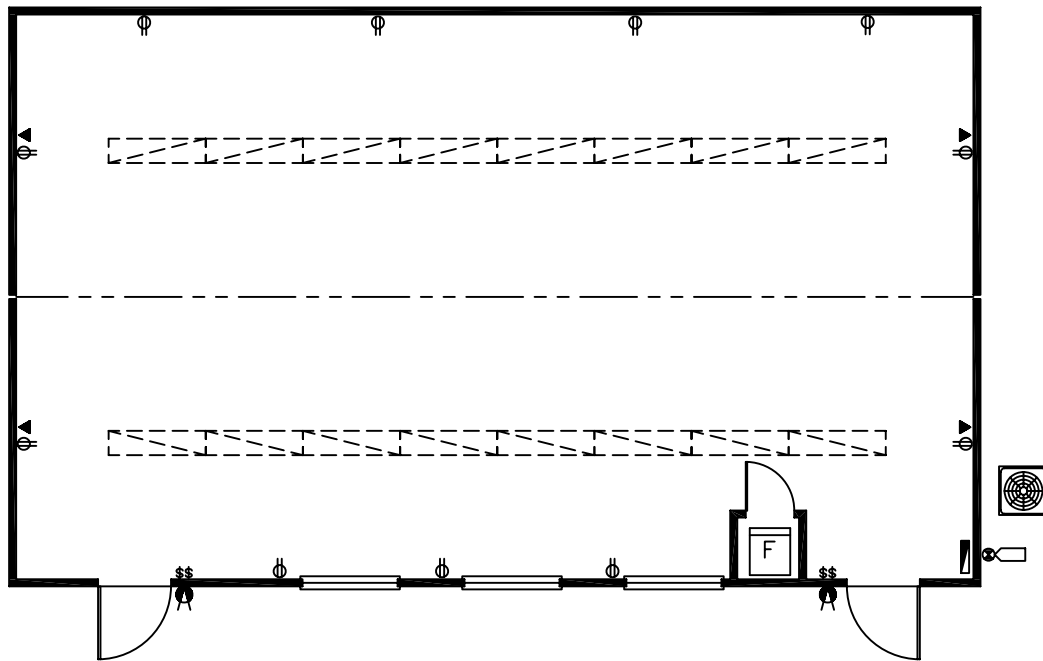
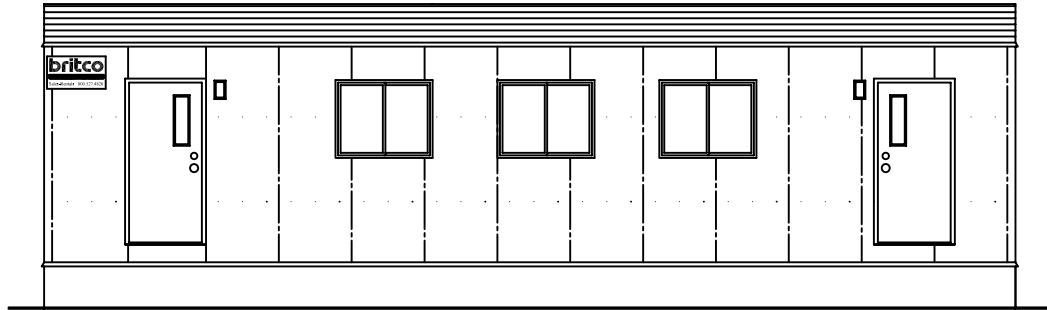


# 24' x 40' CLASSROOM PORTABLE - L2785



## GENERAL SPECIFICATIONS

- |   |  |
|---|--|
| <p><u>Roof</u></p> <ul style="list-style-type: none"> <li>- 45 mil. EPDM roofing</li> <li>- Ceiling: vinyl clad gyproc (white)</li> </ul>                                     | <p><u>Floor</u></p> <ul style="list-style-type: none"> <li>- VC Tile Flooring (commercial grade)</li> </ul>  |
| <p><u>Walls</u></p> <ul style="list-style-type: none"> <li>- Exterior: metal siding and metal fascia</li> <li>- Interior Finish: Vinyl clad gyproc (Norwich Pearl)</li> </ul> | <p><u>Doors</u></p> <ul style="list-style-type: none"> <li>- Exterior - steel doors &amp; steel jambs, deadbolt, passage set &amp; vision strip window</li> </ul>  |
| <p><u>Windows</u></p> <ul style="list-style-type: none"> <li>- 4'-0" x 3'-0" XO window with insect screens</li> </ul>   | <p><u>HVAC</u></p> <ul style="list-style-type: none"> <li>- Electric forced-air furnace w/ infloor ducting</li> <li>- Split system air conditioning</li> </ul>   |
|   | <p><u>Electrical</u></p> <ul style="list-style-type: none"> <li>- 120/240 volt electrical panel, 100 amps, single phase, mast &amp; weather head</li> <li>- Electrical receptacles and tel/data conduits</li> <li>- Exterior light (one per exterior door)</li> <li>- Fluorescent lights, 2-bulb, surface mounted</li> </ul> |



**NEED SPACE FAST?**

Phone: 250.766.0009  
 Fax: 250.766.0019  
 Toll Free: 800.527.4826  
 Website: [www.britco.com](http://www.britco.com)