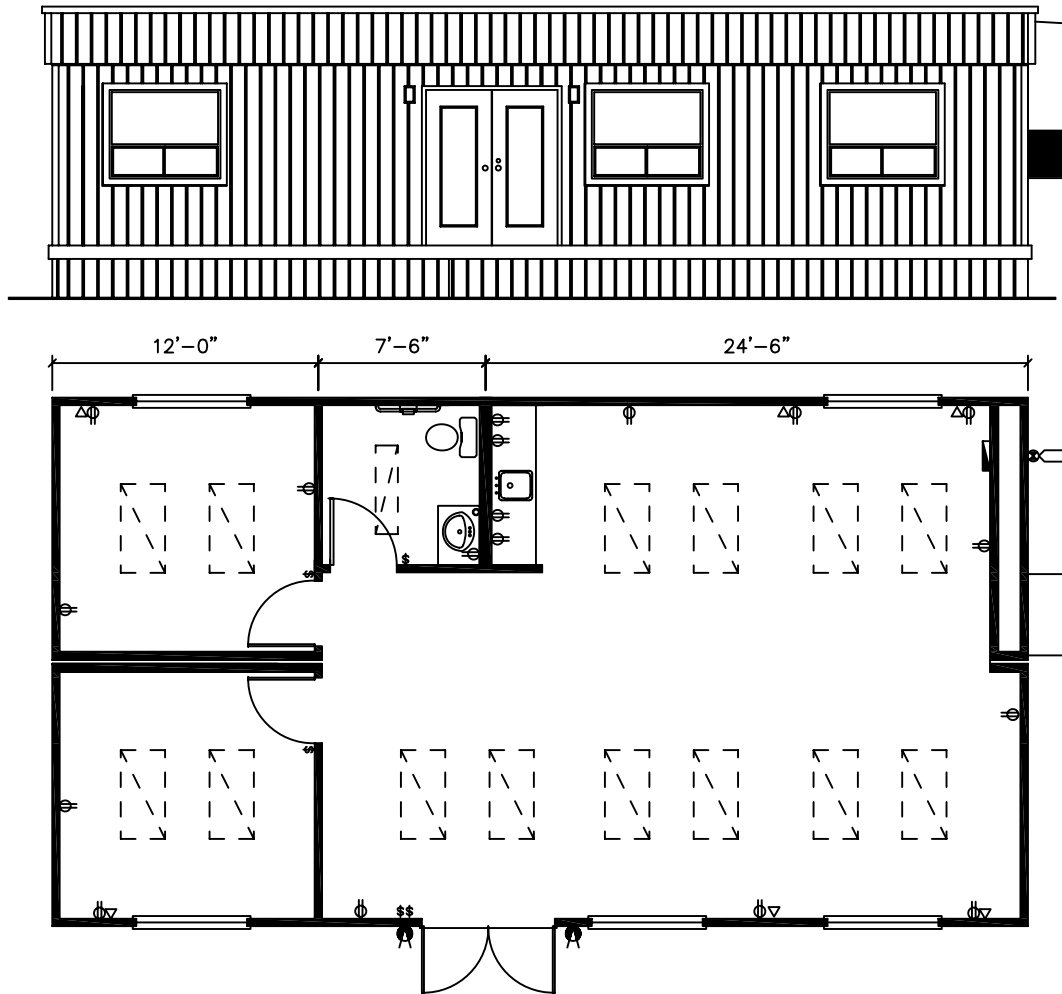


24' x 40' DESIGNER OFFICE COMPLEX - L2414



GENERAL SPECIFICATIONS

Roof - 45 mil. EPDM roofing
- T-Bar suspended ceiling

Walls - Exterior: "Ranchwall" vertical wood siding
- Interior Finish: vinyl clad gyproc (Norwich Pearl)

Windows - 5'-0" x 4'-0" O/XO window with insect screens and security bars (interior)

Plumbing - Washroom: H/C toilet & lav basin with open under counter
- Kitchen: 6' counter with cabinets under c/w stainless steel sink and 6 gallon HWT

Floor - VC Tile Flooring (commercial grade)

Doors - Exterior - hollow core insulated steel door with deadbolt and passage set and half lite windows

Heating - Exterior wall mounted "BARD" HVAC unit (electric) with t-bar ducting

Electrical - 120/240 volt electrical panel, 100 amps, single phase, mast & weather head
- Electrical receptacles and tel/data conduits
- Exterior lights (two in total)
- Fluorescent lights, 4-bulb, recessed



NEED SPACE FAST?

Phone: 604.888.2000
Fax: 604.888.2086
Toll Free: 800.527.4826
Website: www.britco.com